

# SANTA TERESA SUBDIVISION

UNIT NO. 3A  
DONA ANA COUNTY  
NEW MEXICO

KNOW ALL MEN BY THESE PRESENTS; THAT THE FOLLOWING DESCRIBED PARCEL OF LAND SITUATED WITHIN THE SANTA TERESA GRANT, SECTION 21, T28S, R3E, N.M.P.M. DONA ANA COUNTY, NEW MEXICO AND IS MORE PARTICULARLY DESCRIBED BY METES AND BOUNDS SURVEY AS FOLLOWS:

BEGINNING AT THE SOUTHEAST CORNER OF THE PARCEL HEREIN DESCRIBED, WHENCE MEANDER CORNER NO. 5 ON THE WESTERLY BOUNDARY OF THE SANTA TERESA GRANT, BEARS S 39° 36' 01" W, A DISTANCE OF 2328.86'; THENCE N 67° 34' 35" W, A DISTANCE OF 493.00'; THENCE N 22° 25' 25" E, A DISTANCE OF 273.21'; THENCE N 03° 26' 36" W, A DISTANCE OF 675.96'; THENCE S 86° 33' 24" E, A DISTANCE OF 283.66'; THENCE S 89° 12' 55" E, DISTANCE OF 573.05'; THENCE S 22° 25' 25" W, 1216.53' TO THE POINT OF BEGINNING AND CONTAINING 15.203 ACRES MORE OR LESS.

THE ABOVE DESCRIBED PARCEL IS SURVEYED AND SUBDIVIDED AS SHOWN HEREIN, COMPRISING BLOCKS 1, 2, 3 & 4 TOGETHER WITH PRIVATE STREETS AND EASEMENTS AS SHOWN HEREON, WITH THE FREE CONSENT AND IN ACCORDANCE WITH THE WISHES OF THE UNDERSIGNED OWNERS.

STATE OF NEW MEXICO )  
COUNTY OF DONA ANA ) SS

THE FOREGOING INSTRUMENT WAS ACKNOWLEDGED BY ME THIS 11th DAY OF May, 1976,  
BY Charles A. Attidge AND \_\_\_\_\_ OF SANTA TERESA DEVELOPERS.  
MY COMMISSION EXPIRES Jan 1, 1978. Edward E. Houston NOTARY PUBLIC.

IN WITNESS WHEREOF THESE PRESENTS HAVE BEEN EXECUTED IN BEHALF OF SANTA TERESA DEVELOPERS BY AUTHORITY OF Charles A. Attidge DATE \_\_\_\_\_  
ATTORNEY-IN-FACT

FILED FOR RECORD IN THE OFFICE OF THE COUNTY CLERK OF DONA ANA COUNTY, NEW MEXICO, THIS 13 DAY OF May, 1976. 8:27 A.M.

12 BOOK 60 PAGE  
Rita Torres  
COUNTY CLERK

THIS PLAT, RESTRICTIONS AND DEDICATIONS, ARE APPROVED AND ACCEPTED THIS 11th DAY OF May, 1976.

THE COUNTY PLANNING COMMISSION OF DONA ANA COUNTY  
John C. Brown SECRETARY C. L. O'Neal CHAIRMAN

I HEREBY ACKNOWLEDGE THAT THERE ARE NO DELINQUENT TAXES, SUITS, ACTIONS AT LAW, EASEMENTS, RESTRICTIVE COVENANTS OR RIGHTS OF WAY AFFECTING THE PROPERTY EXCEPT STATED ON THE PLAT.

Charles A. Attidge  
FOR SANTA TERESA DEVELOPERS ATTORNEY-IN-FACT

### SURVEYORS CERTIFICATE

I, WILLIAM P. PETTIT, DO HEREBY CERTIFY THAT THIS PLAT WAS PREPARED BY ME, AND THAT THE INFORMATION SHOWN HEREON IS CORRECT TO THE BEST OF MY KNOWLEDGE AND BELIEF.

William P. Pettit  
WILLIAM P. PETTIT N.M.L.S. NO. 3243

EASEMENTS SHOWN HEREON FOR OVERHEAD AND UNDERGROUND TELEPHONE ARE SATISFACTORY TO MEET THE NEEDS FOR INSTALLATION OF TELEPHONE UTILITIES.

MOUNTAIN BELL TEL. & TEL. CO.  
BY William R. Proctor

EASEMENTS SHOWN HEREON FOR OVERHEAD AND UNDERGROUND ELECTRICAL DISTRIBUTION ARE SATISFACTORY TO MEET THE NEEDS FOR INSTALLATION OF ELECTRICAL UTILITIES.

EL PASO ELECTRIC CO.  
BY Jesse J. Sadler

### COUNTY COMMISSIONERS APPROVAL

THIS PLAT HAS BEEN SUBMITTED TO AND CHECKED BY THE BOARD OF COMMISSIONERS FOR DONA ANA COUNTY, NEW MEXICO.

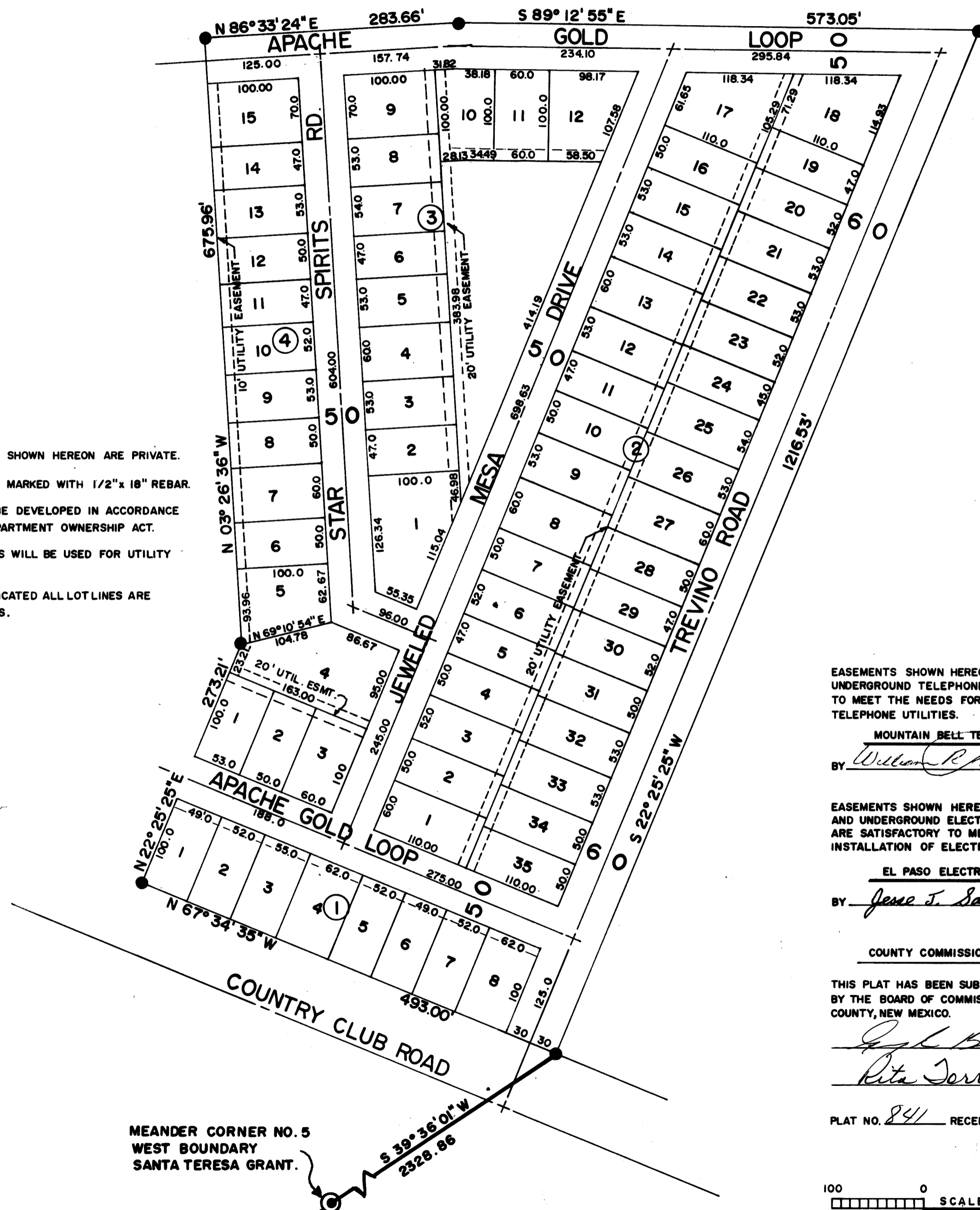
Joseph King CHAIRMAN  
Rita Torres SECRETARY

PLAT NO. 841 RECEPTION NO. 2594 at 8:27 A.M.

100 0 100 200  
SCALE

### GENERAL NOTES:

1. ALL ROADWAY EASEMENTS SHOWN HEREON ARE PRIVATE.
2. ALL BLOCK CORNERS ARE MARKED WITH 1/2" x 18" REBAR.
3. LAND IN UNIT 3A IS TO BE DEVELOPED IN ACCORDANCE WITH THE NEW MEXICO APARTMENT OWNERSHIP ACT.
4. ALL ROADWAY EASEMENTS WILL BE USED FOR UTILITY EASEMENTS.
5. UNLESS OTHERWISE INDICATED ALL LOT LINES ARE PERPENDICULAR TO STREETS.



MEANDER CORNER NO. 5  
WEST BOUNDARY  
SANTA TERESA GRANT.

REVISIONS			SANTA TERESA DEVELOPERS		
NO.	DATE	BY	P.O. BOX 13029-EL PASO, TEXAS - 79912		
1					
2					
3			DRAWN BY <u>W.P.E.</u>	SCALE AS SHOWN	MATERIAL
4			CHK'D	DATE 5-8-76	DRAWING NO.
5			TRACED	APP'D	